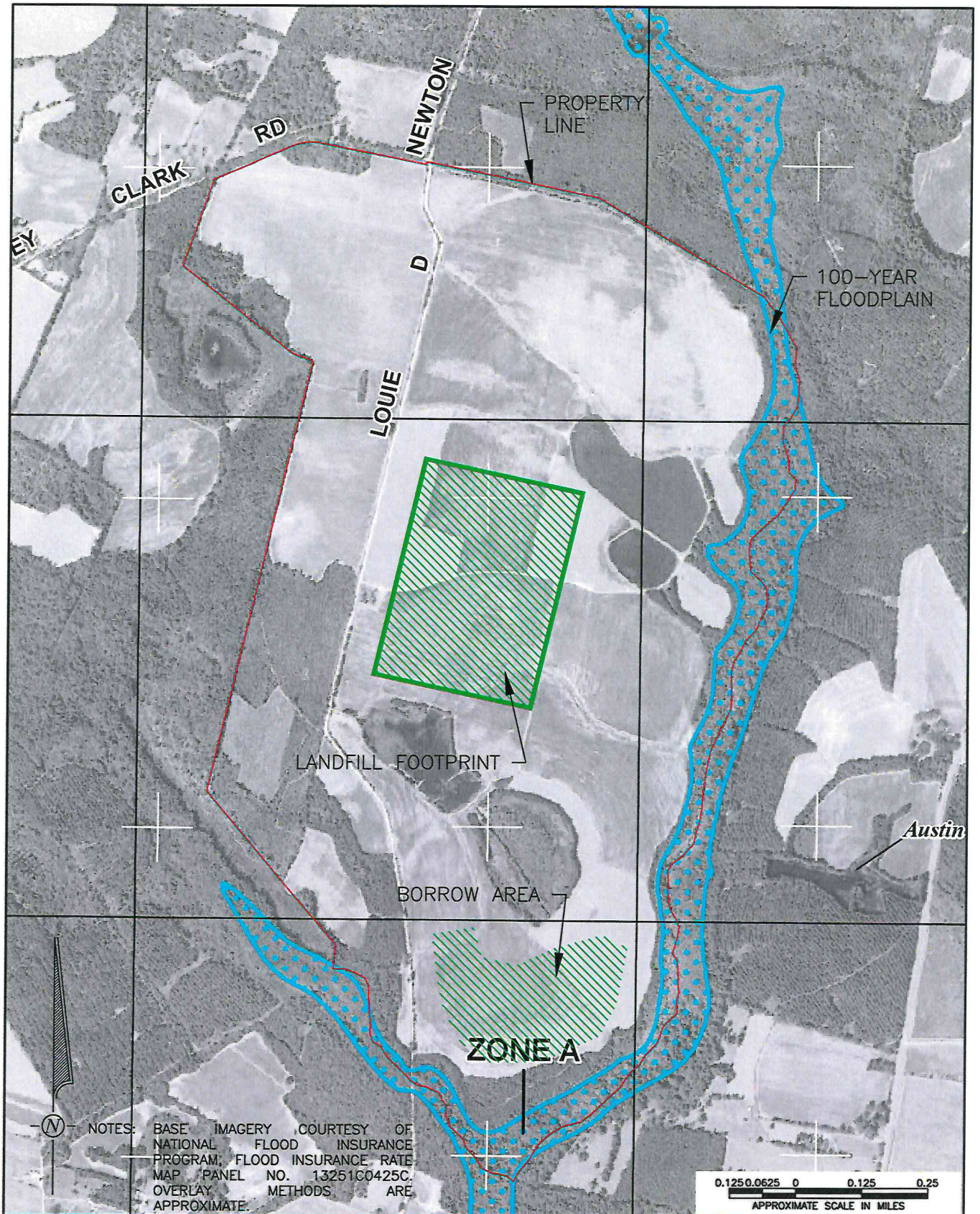


REQUEST FOR AG-3 AGRICULTURAL AND RESIDENTIAL CONDITIONAL USE
GREEN MEADOWS MUNICIPAL SOLID WASTE DISPOSAL & RECYCLING FACILITY
Amended Application for July 9, 2019 Submittal

ATTACHMENT I

Figures for Consistency with Solid Waste Management Plan



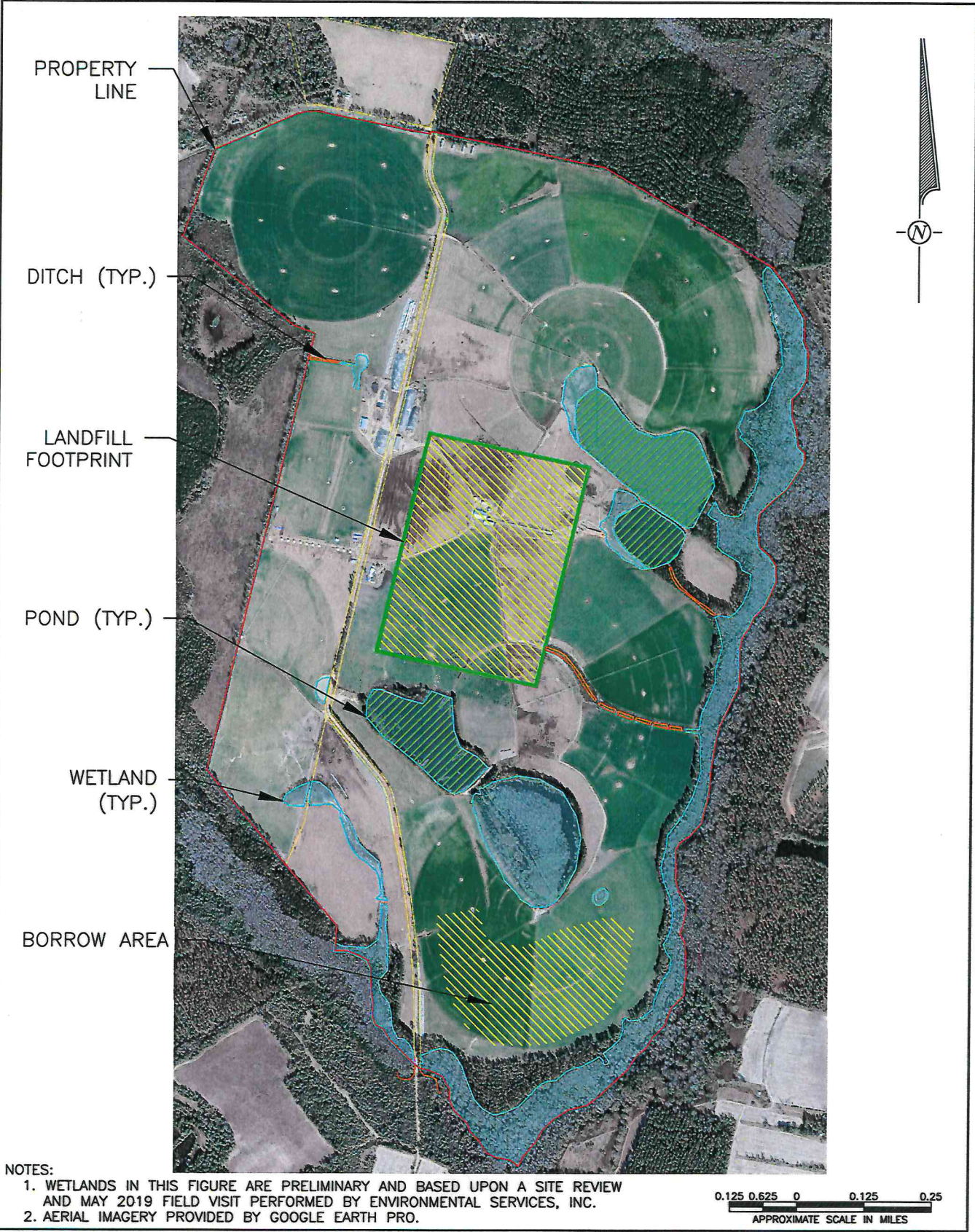
ATLANTIC WASTE SERVICES, INC.

PROPOSED LANDFILL IN SCREVEN COUNTY, GEORGIA

CONSISTENCY WITH
SOLID WASTE MANAGEMENT PLAN

PROXIMITY TO
FLOODPLAINS

FIGURE
01



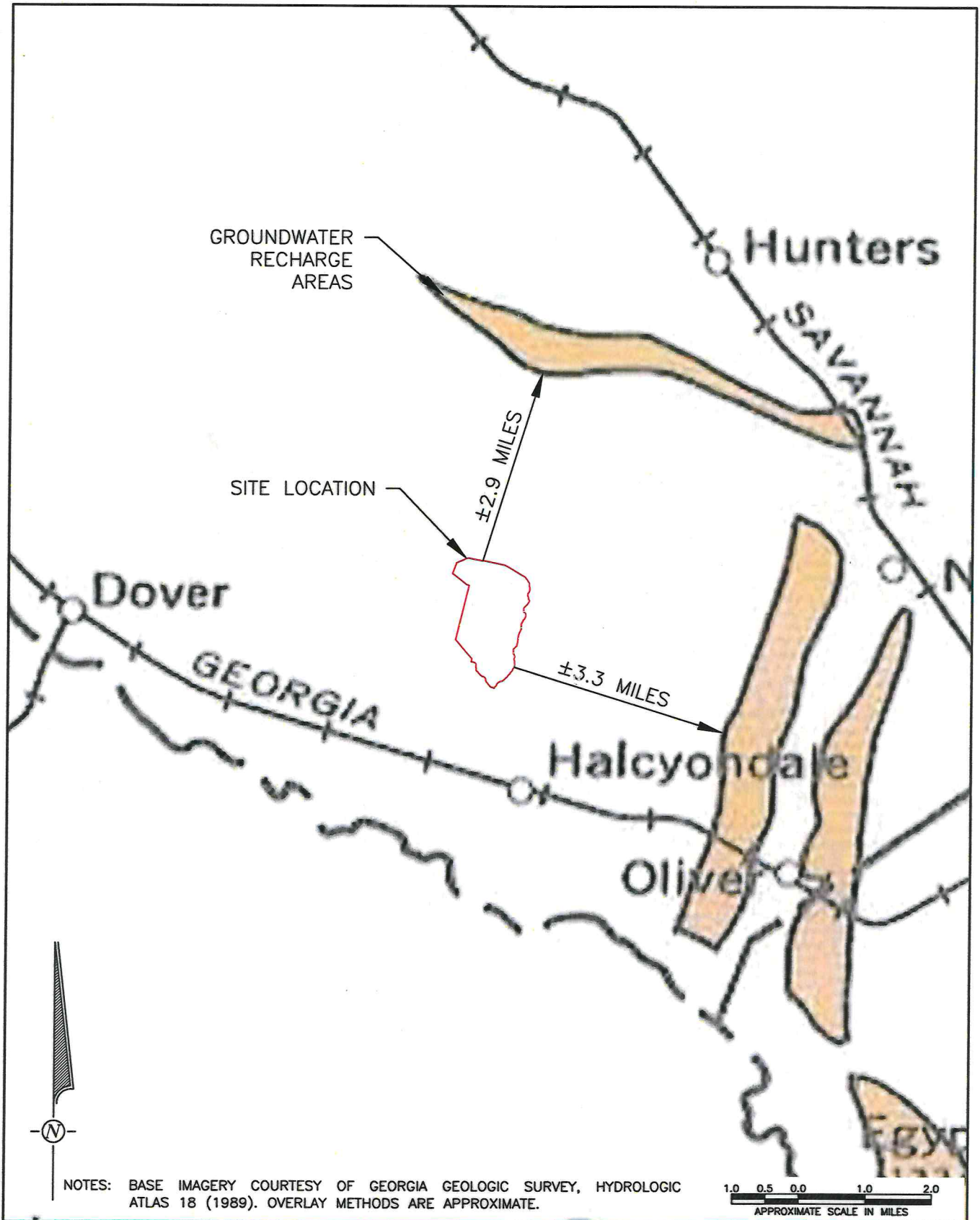
ATLANTIC WASTE SERVICES, INC.

PROPOSED LANDFILL IN SCREVEN COUNTY, GEORGIA

CONSISTENCY WITH
SOLID WASTE MANAGEMENT PLAN

PROXIMITY TO WETLANDS

FIGURE
02



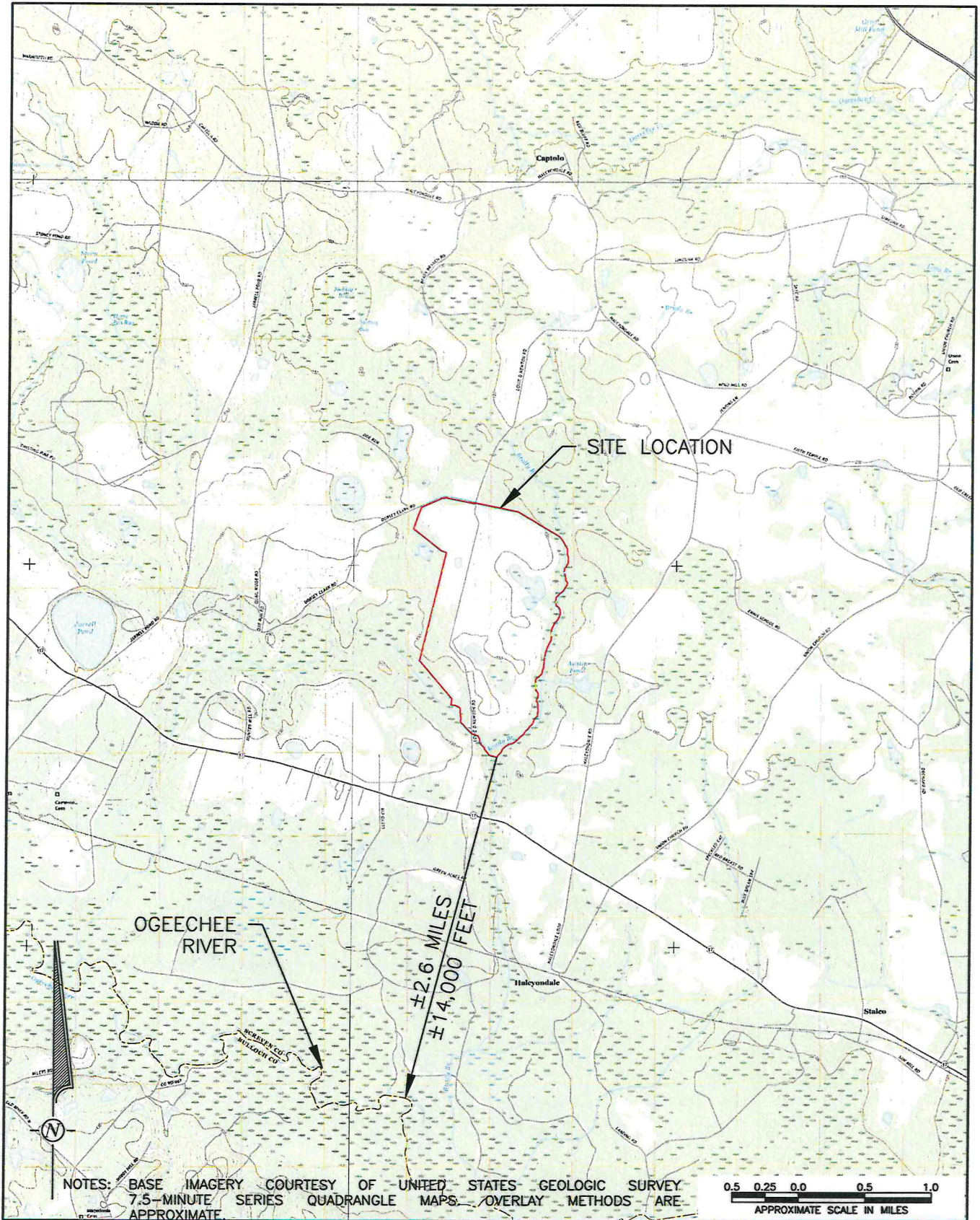
ATLANTIC WASTE SERVICES, INC.

PROPOSED LANDFILL IN SCREVEN COUNTY, GEORGIA

CONSISTENCY WITH
SOLID WASTE MANAGEMENT PLAN

PROXIMITY TO
GROUNDWATER RECHARGE AREAS

FIGURE
03



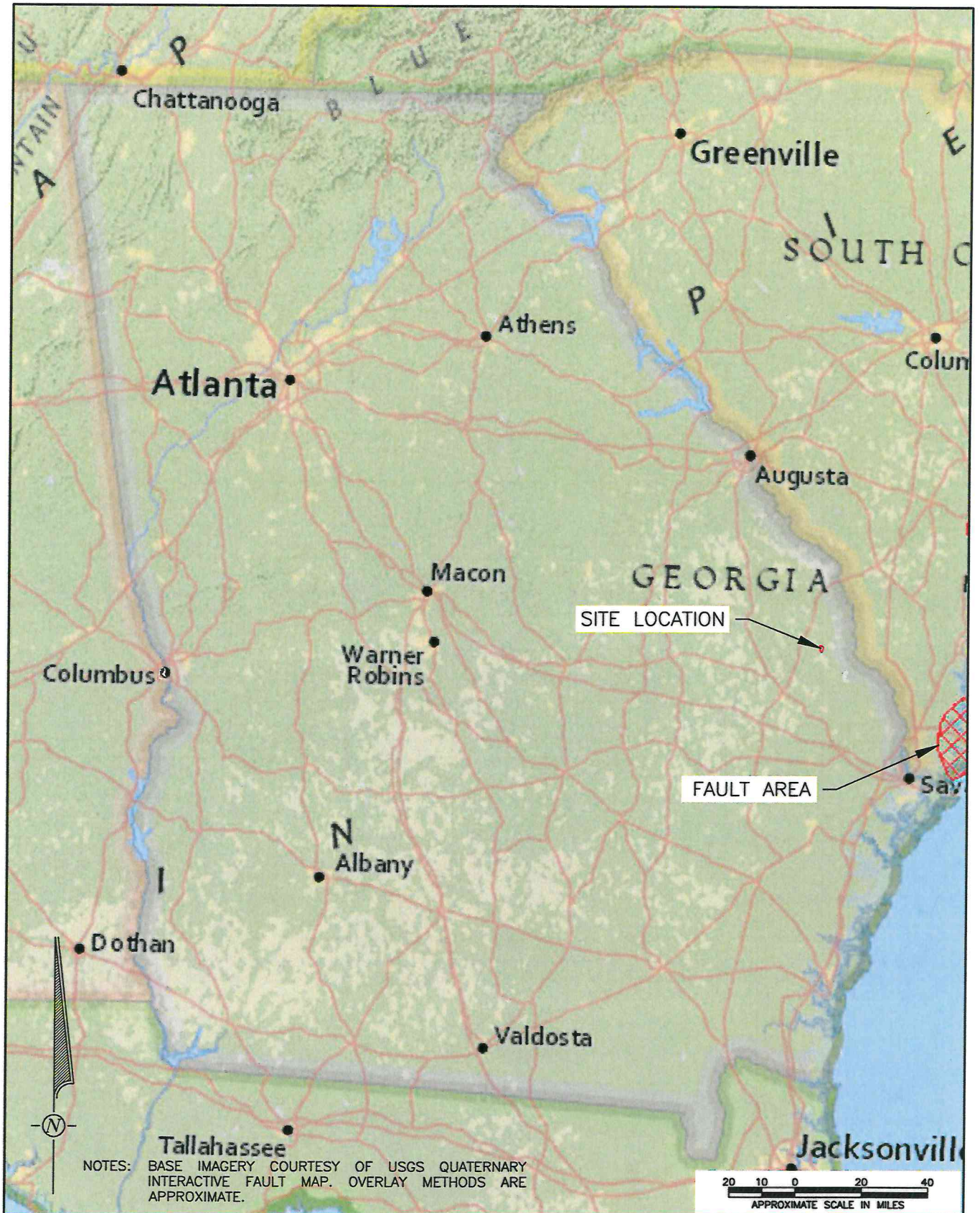
ATLANTIC WASTE SERVICES, INC.

PROPOSED LANDFILL IN SCREVEN COUNTY, GEORGIA

CONSISTENCY WITH
SOLID WASTE MANAGEMENT PLAN

PROXIMITY TO RIVER CORRIDORS

FIGURE
04



ATLANTIC WASTE SERVICES, INC.

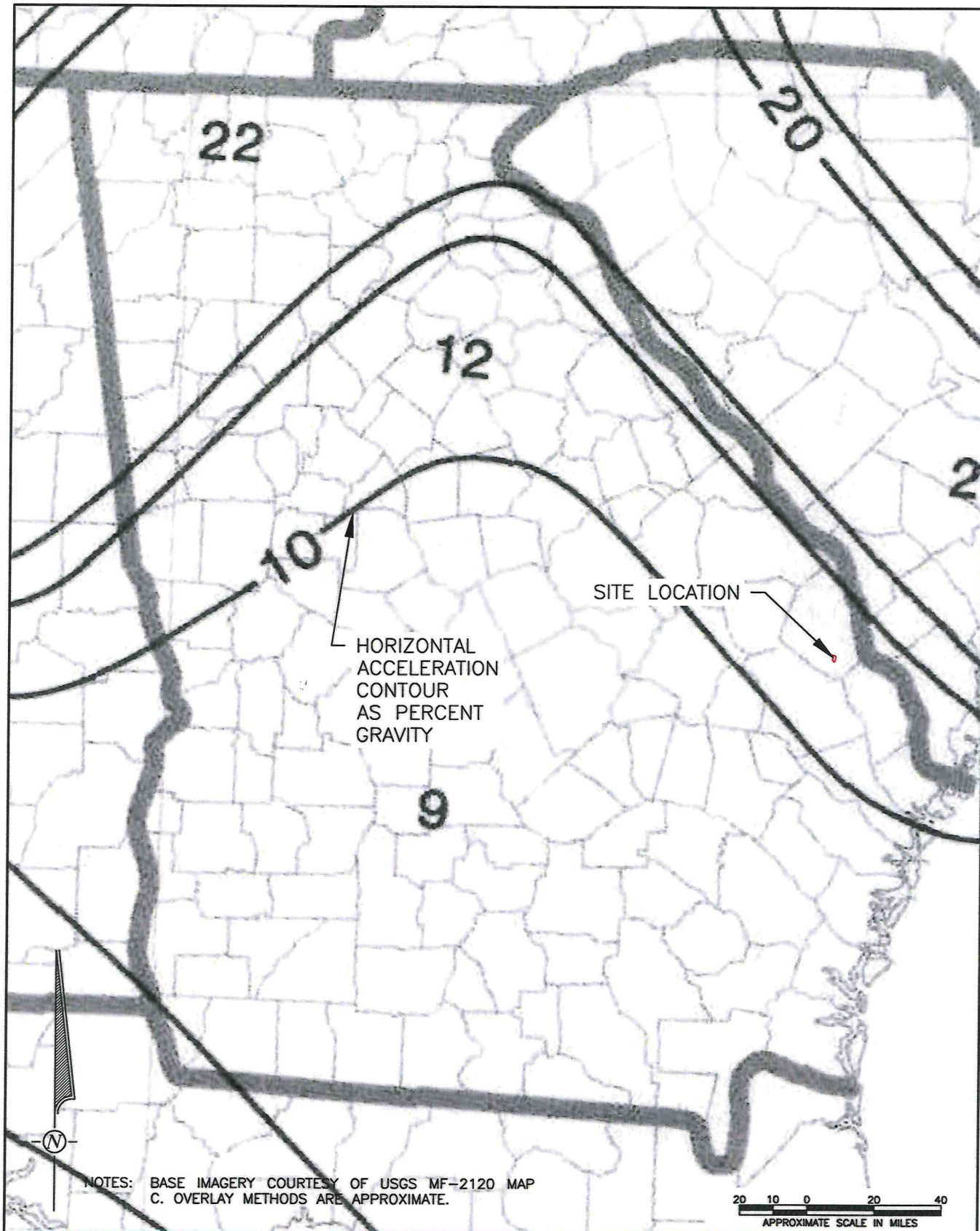
PROPOSED LANDFILL IN SCREVEN COUNTY, GEORGIA

CONSISTENCY WITH
SOLID WASTE MANAGEMENT PLAN

PROXIMITY TO FAULT AREAS

FIGURE

05



ATLANTIC WASTE SERVICES, INC.

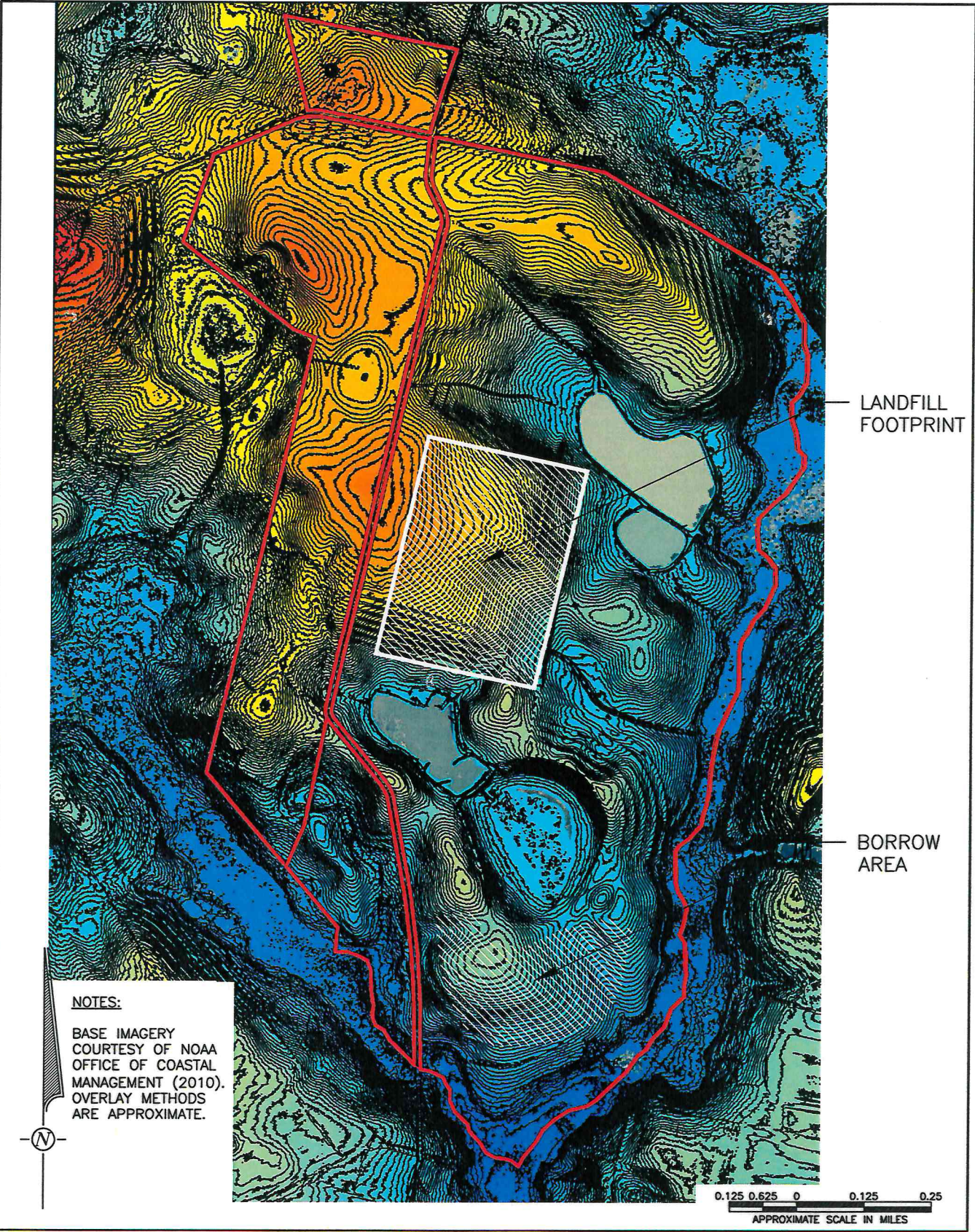
PROPOSED LANDFILL IN SCREVEN COUNTY, GEORGIA

CONSISTENCY WITH
SOLID WASTE MANAGEMENT PLAN

PROXIMITY TO SEISMIC IMPACT ZONES

FIGURE

06



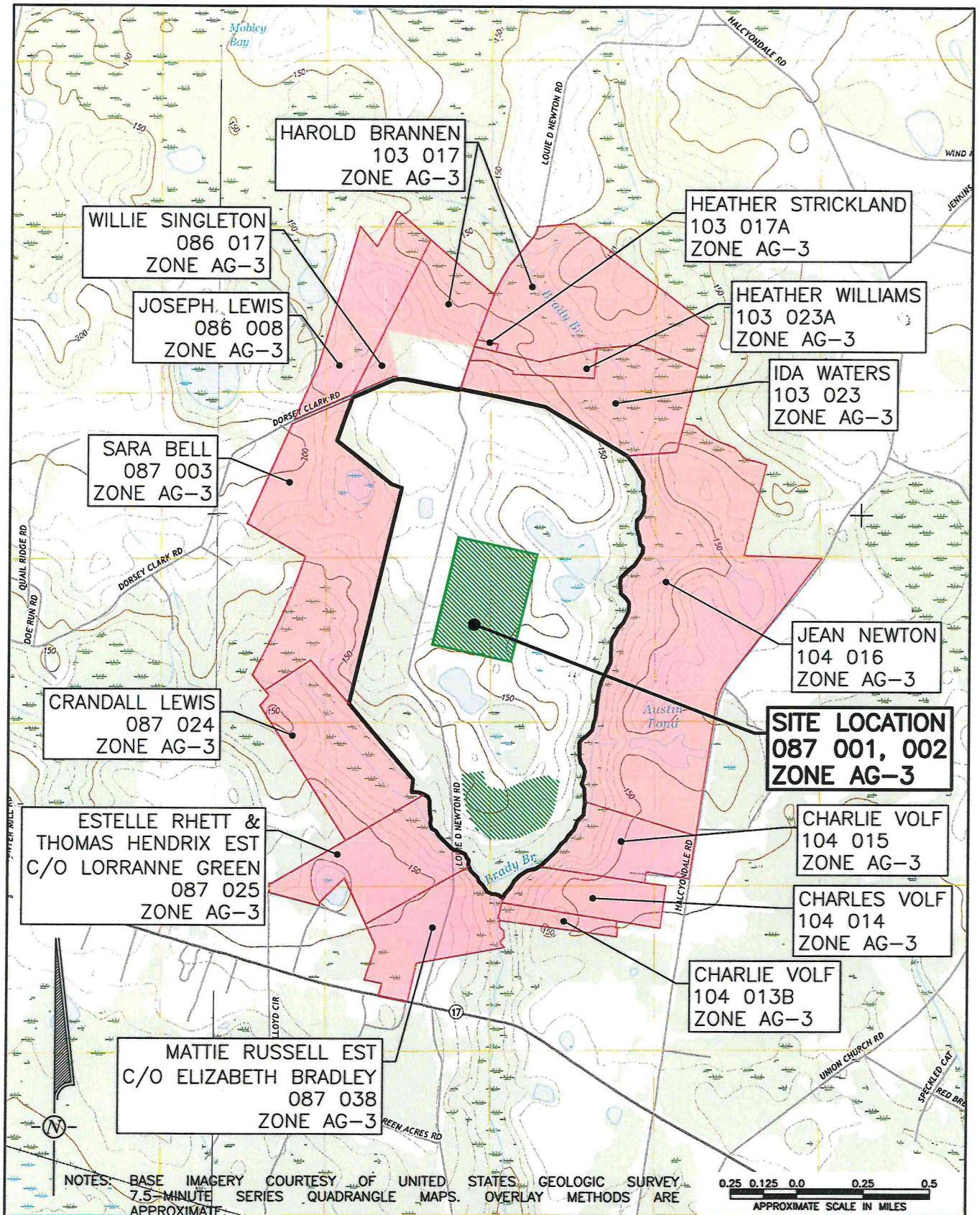
ATLANTIC WASTE SERVICES, INC.

PROPOSED LANDFILL IN SCREVEN COUNTY, GEORGIA

CONSISTENCY WITH
 SOLID WASTE MANAGEMENT PLAN

PROXIMITY TO UNSTABLE AREAS

FIGURE
 07



ATLANTIC WASTE SERVICES, INC.

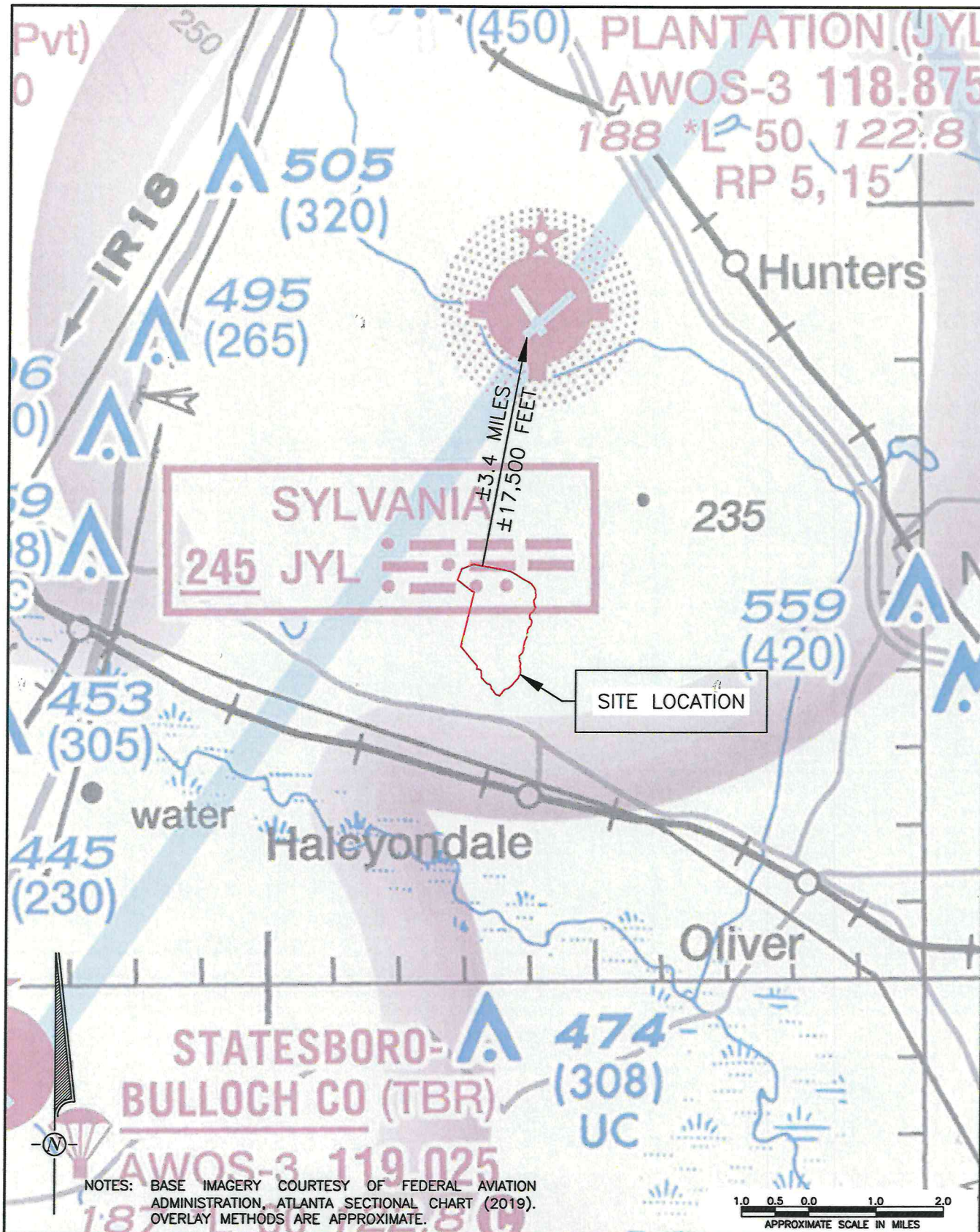
PROPOSED LANDFILL IN SCREVEN COUNTY, GEORGIA

CONSISTENCY WITH
SOLID WASTE MANAGEMENT PLAN

ZONING FOR ADJACENT PROPERTIES

FIGURE

08



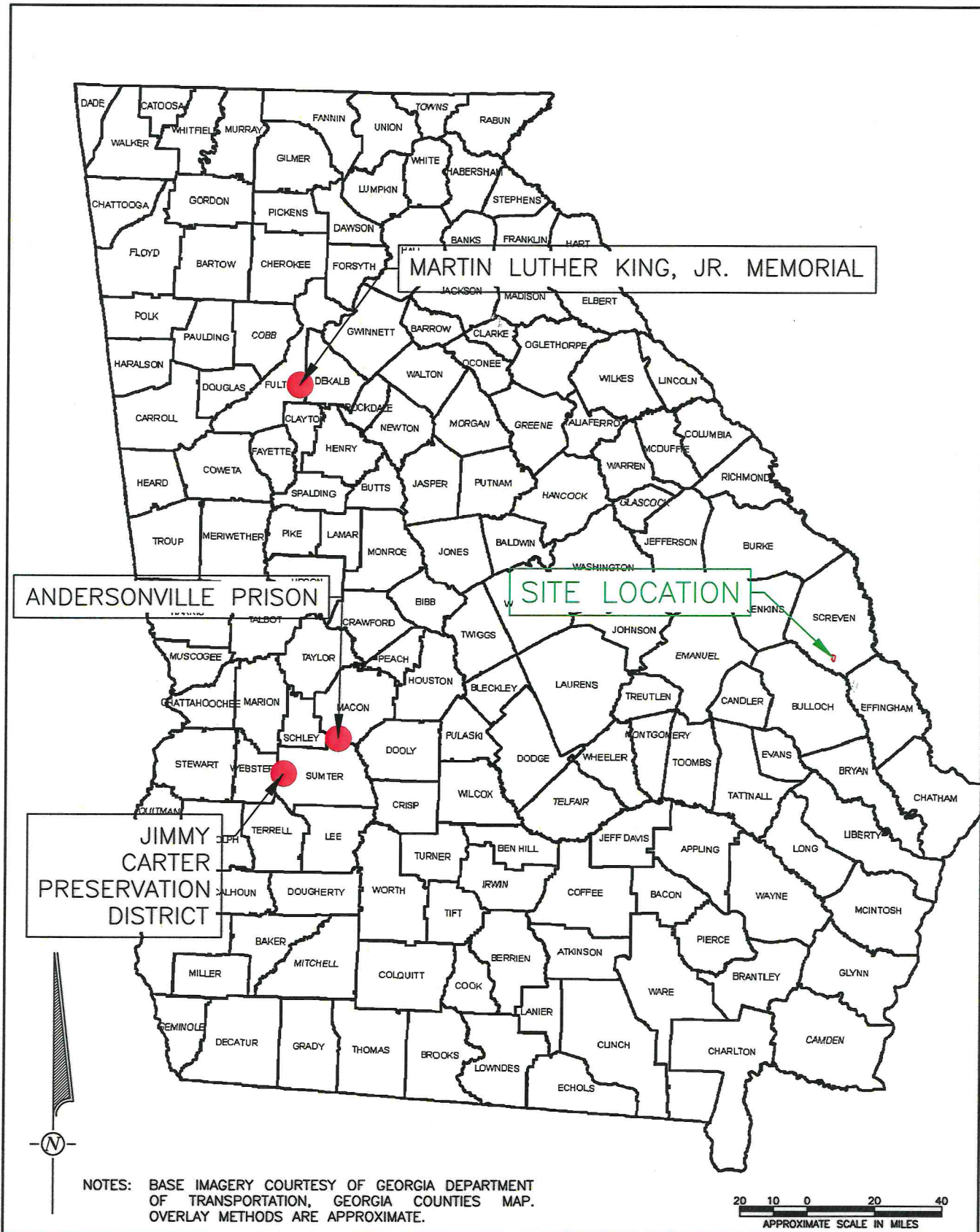
ATLANTIC WASTE SERVICES, INC.

PROPOSED LANDFILL IN SCREVEN COUNTY, GEORGIA

CONSISTENCY WITH
SOLID WASTE MANAGEMENT PLAN

PROXIMITY TO AIRPORTS

FIGURE
09



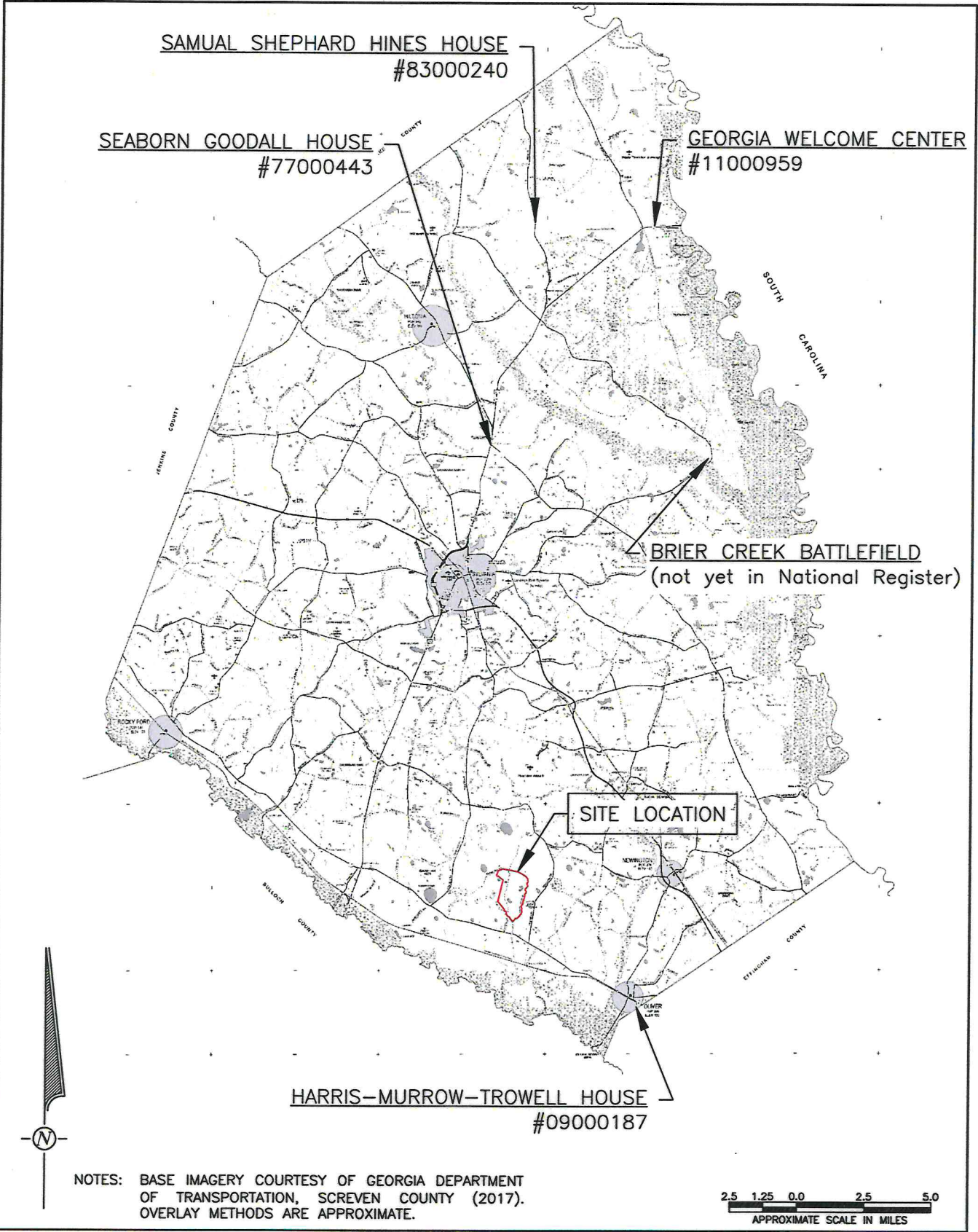
ATLANTIC WASTE SERVICES, INC.

PROPOSED LANDFILL IN SCREVEN COUNTY, GEORGIA

CONSISTENCY WITH
SOLID WASTE MANAGEMENT PLAN

PROXIMITY TO NATIONAL HISTORIC SITES

FIGURE
10a



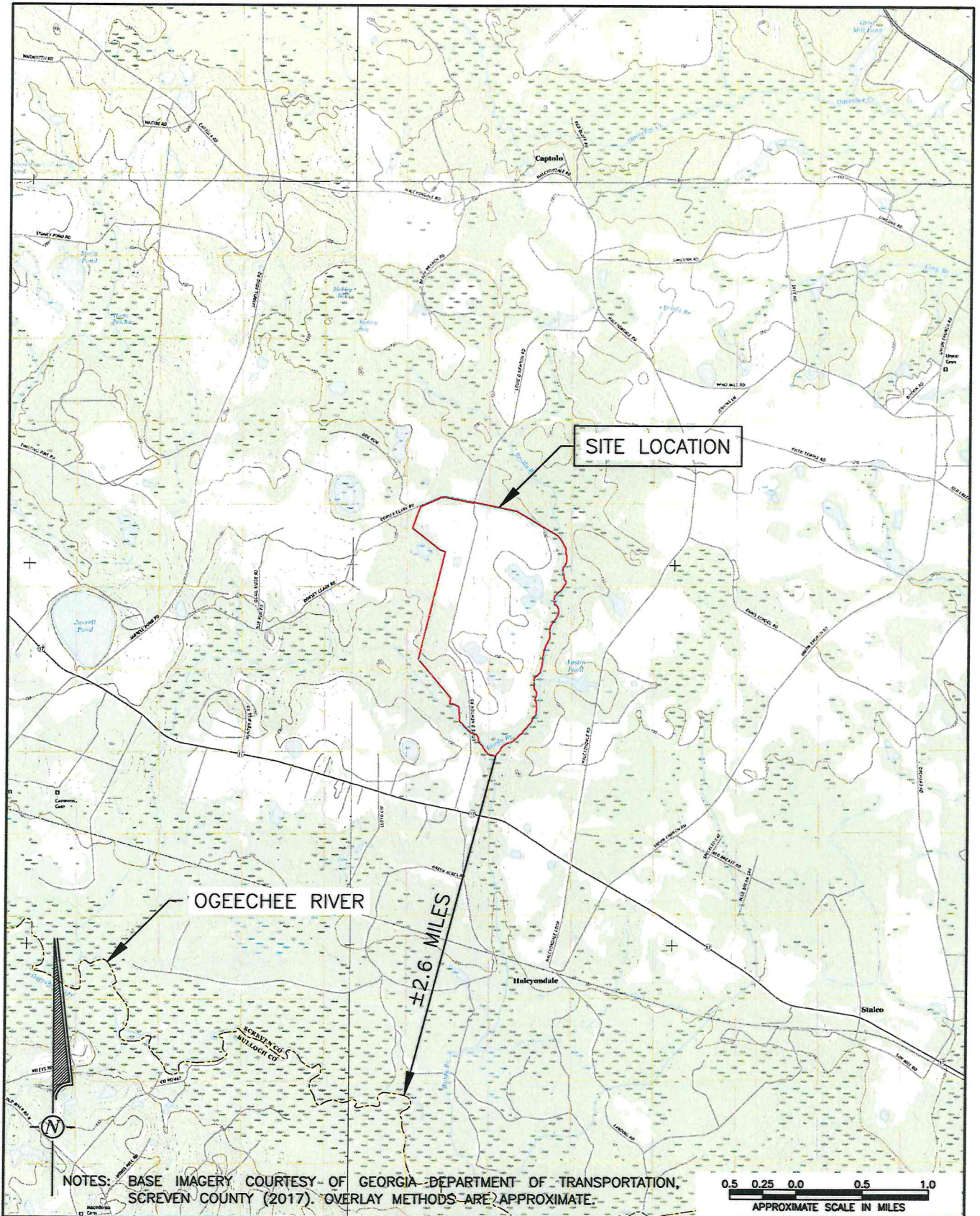
ATLANTIC WASTE SERVICES, INC.

PROPOSED LANDFILL IN SCREVEN COUNTY, GEORGIA

CONSISTENCY WITH
SOLID WASTE MANAGEMENT PLAN

PROXIMITY TO NATIONAL HISTORIC PLACES
IN SCREVEN COUNTY

FIGURE
10b



ATLANTIC WASTE SERVICES, INC.

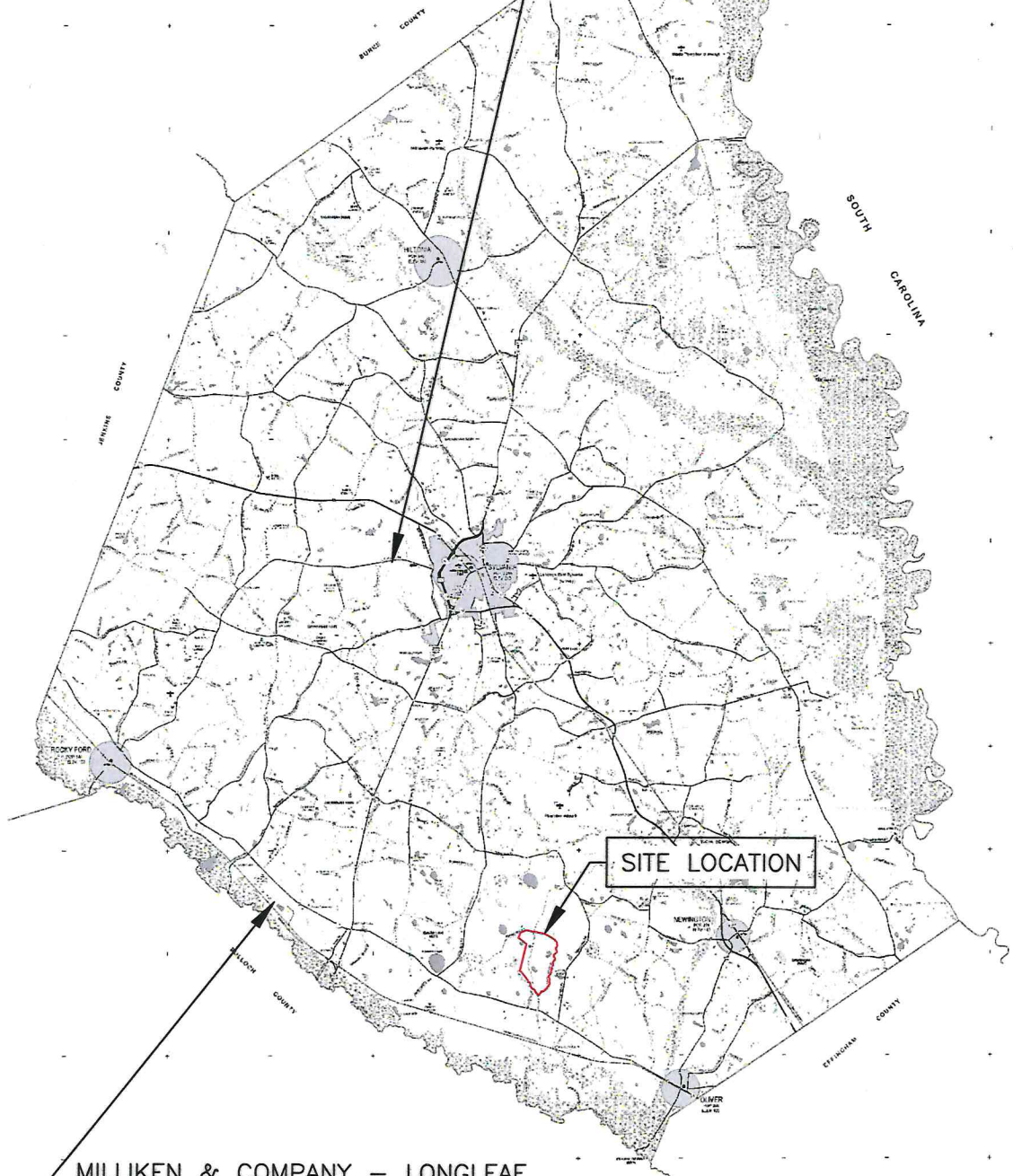
PROPOSED LANDFILL IN SCREVEN COUNTY, GEORGIA

CONSISTENCY WITH
SOLID WASTE MANAGEMENT PLAN

PROXIMITY TO COUNTY BORDERS

FIGURE
11

**SCREVEN COUNTY – ROCKY FORD RD
124-003D(SL) [CLOSED]**



**MILLIKEN & COMPANY – LONGLEAF
124-006D(LI) [CLOSED]**



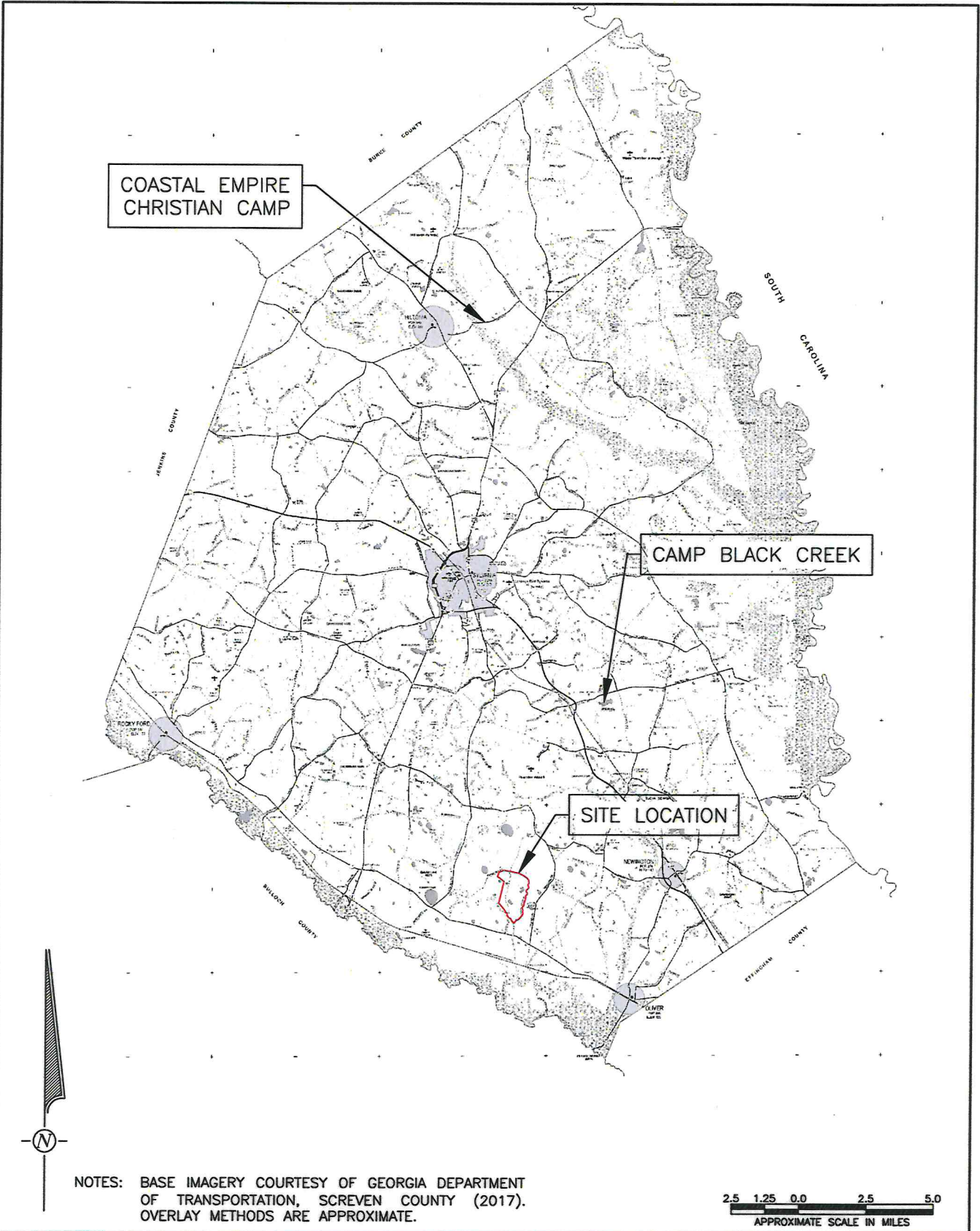
NOTES: BASE IMAGERY COURTESY OF GEORGIA DEPARTMENT OF TRANSPORTATION, SCREVEN COUNTY (2017).
OVERLAY METHODS ARE APPROXIMATE.



ATLANTIC WASTE SERVICES, INC.
PROPOSED LANDFILL IN SCREVEN COUNTY, GEORGIA

CONSISTENCY WITH
SOLID WASTE MANAGEMENT PLAN
PROXIMITY TO OTHER LANDFILLS

FIGURE
12



ATLANTIC WASTE SERVICES, INC.

PROPOSED LANDFILL IN SCREVEN COUNTY, GEORGIA

CONSISTENCY WITH
SOLID WASTE MANAGEMENT PLAN

PROXIMITY TO PRIVATE RECREATIONAL CAMPS

FIGURE
13



ATLANTIC WASTE SERVICES, INC.

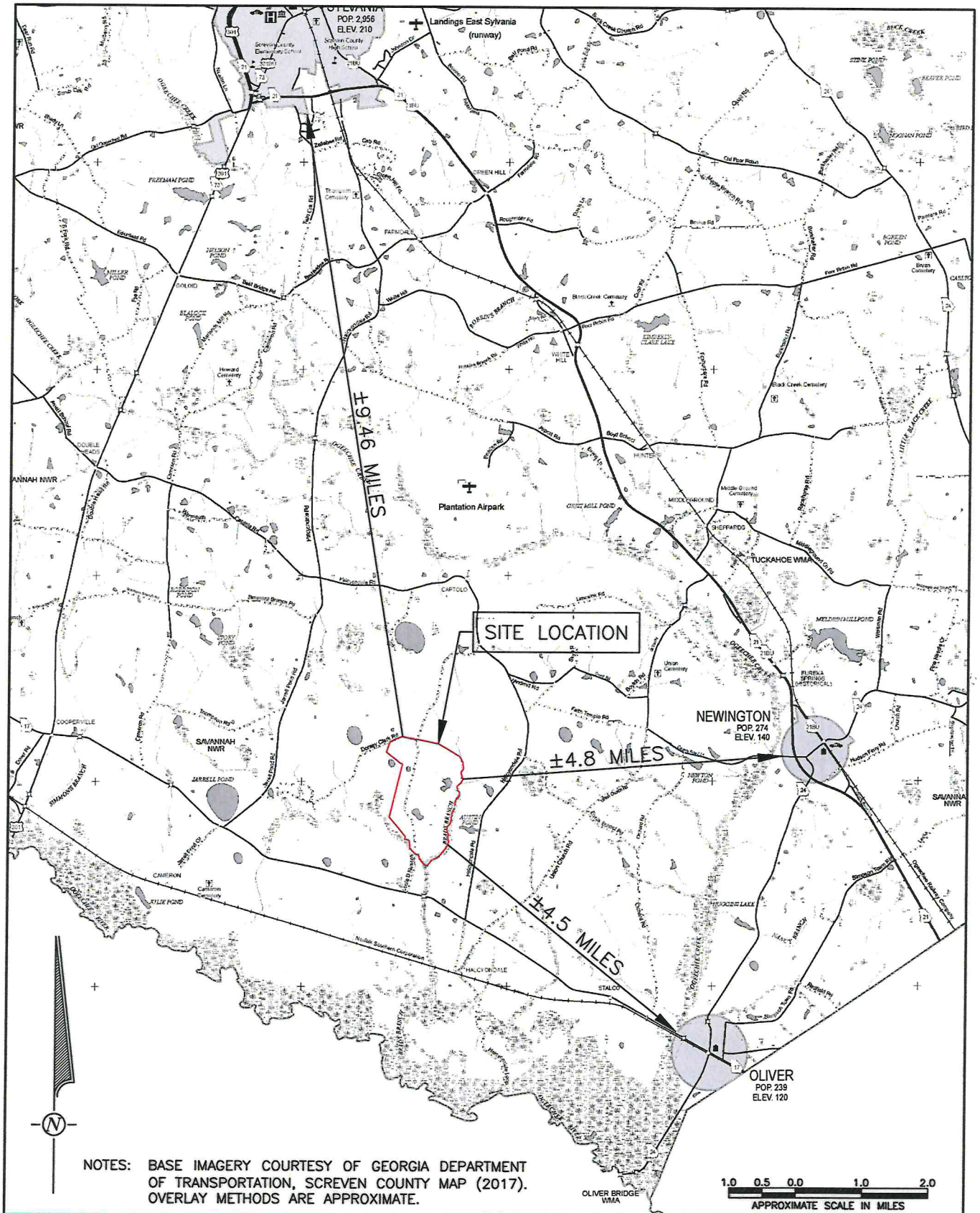
PROPOSED LANDFILL IN SCREVEN COUNTY, GEORGIA

CONSISTENCY WITH
SOLID WASTE MANAGEMENT PLAN

USDA SOIL MAP

FIGURE

14



ATLANTIC WASTE SERVICES, INC.

PROPOSED LANDFILL IN SCREVEN COUNTY, GEORGIA

CONSISTENCY WITH
SOLID WASTE MANAGEMENT PLAN

PROXIMITY TO MUNICIPAL BOUNDARIES

FIGURE
15