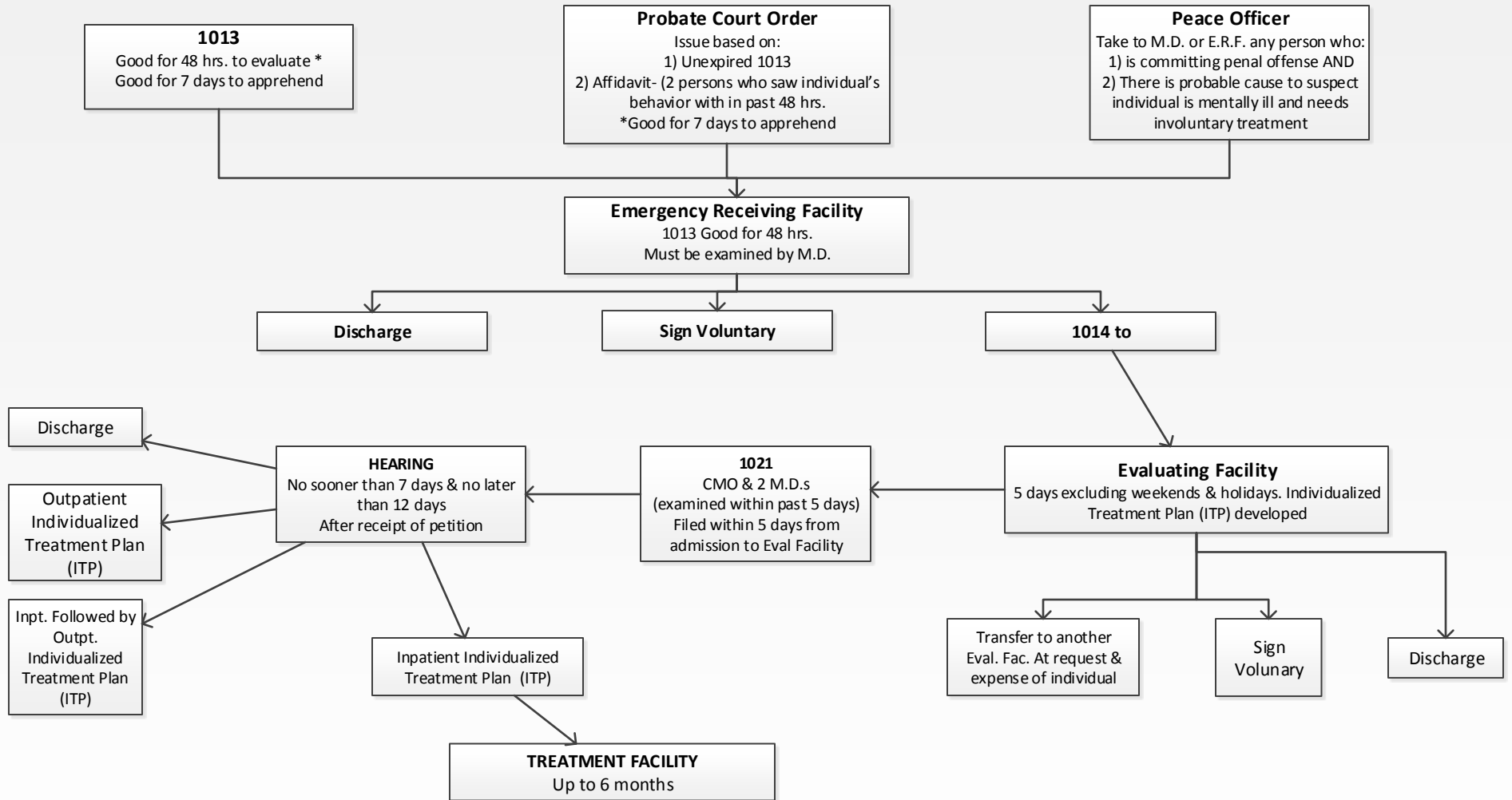


# EMERGENCY ADMISSION PROCESS MAP

## INVOLUNTARY CARE DECISION TREE Applicable to Georgia's Emergency Receiving, Evaluating and Treatment Facilities



*\* Note: If transfer from CSU to treatment facility is required for a hearing for involuntary care, this must occur by the third day of the 5 day evaluation period*

*\*Georgia Law permits 1013/2013 to be signed by MD, Psychologist, LCSW, APRN [CNS].  
Prepared by Clinical Records Department of Georgia Mental Health Institute 7/85. Re-printed 7/97 and 3/13 MLRahn*